

The operating model aims to increase the rehabilitation options for inmates by organising prisoner programs, work and recreation, so that prisoners are engaged in constructive activities to the highest possible level during the time they are out of their cells.

Currently the Prison Service is working to implement improved operating practices within the existing infrastructure. A review of prisoner accommodation has been completed and the Prison Service is currently in the process of implementing new accommodation arrangements within the Prison. This will enable the existing prison 'yards' to be used to accommodate groups of prisoners with differing backgrounds and needs. A placement panel has been set up to make sure that decisions about the placement of new inmates are made consistently and that all relevant factors are taken into account.

A change-management process is also underway and 22 Organisational Development Support Officers have been appointed from within the Prison Service to provide suggestions for the change management process, to put forward the views of staff and to improve communication across the Prison Service.

How will the new Secure Mental Health Unit operate?

The Secure Mental Health Unit (SMHU) will be located on the grounds of the current Prison site at Risdon. It will be operated by the Department of Health and Human Services. It will provide a therapeutic environment in a secure setting for prisoners/patients with severe mental health conditions.

The Unit will provide the best possible treatment for patients and support their independence and dignity while, at the same time, maintaining high security to minimise any risk to the broader community.

People will be referred to the SMHU from the Men's and Women's Prisons when they require specialist mental health treatment and care. Some patients will be transferred back to the Men's or Women's Prison to serve out the rest of their sentence once a psychiatric condition has been stabilised. Others may spend a prolonged period of time living in the Unit.

The SMHU facilities will allow for the provision of modern, high-quality, psychiatric treatment and care delivered by multi-disciplinary teams of health professionals and a range of visiting services. Treatment and care will be based on individually tailored rehabilitation programs that maximise individual functioning and minimise the ill effects of long term care. A comprehensive case management system will be in place for all patients within the Unit.

There will be a strong focus on maintaining links with family, friends, carers, service providers and the community to prevent patients within the Unit from becoming isolated. Patients and other key persons in the life of the residents of the Unit will be actively involved in planning the type of care provided.

Who has contributed to the planning of the new facilities?

An extensive community consultation process has been undertaken over 2001 and 2002 with staff of the Prison Service, prisoners, their families, advocacy groups, service provider and support groups. A summary of the suggestions made by interested groups and individuals to date is available on the PIRP website. The project involves an ongoing consultation process and input is welcome at any time. The consultation so far has mainly focussed on the operating model and the buildings required for the new facilities. As the planning process enters the design phase

there will be more of a focus on local Risdon Vale residents, community groups, Council and neighbours of the Prison site. Consultation will also continue with other interested groups during the design phase.

How else can you find out what is happening?

The Prisons Infrastructure Redevelopment Program team produces information sheets like this one every 3-4 months. Articles are also produced for the Eastern Shore Sun and a number of newsletters. Information sheets are distributed through local Risdon Vale outlets (eg Community Health and Neighbourhood Centres), Clarence Council and Service Tasmania shops around the State. They are also posted to a range of organisations and individuals who have expressed an interest in the project and are placed on the PIRP website: www.justice.tas.gov.au/pirp/index.htm

If you would like to receive the information sheet electronically rather than in hard copy please contact the PIRP Unit to advise us of this preference.

If you would like more information or wish to make comments about the redevelopment you can contact the Prisons Infrastructure Redevelopment Program Unit:

Phone (03) 62334758

Email pirp@justice.tas.gov.au

Or send comments electronically through the website.

Your feedback is important to us.

INFRASTRUCTURE

PRISONS

REDEVELOPMENT

PROGRAM



Tasmania

INFORMATION SHEET 3 Prisons Infrastructure Redevelopment Program (PIRP)

August 2002

When will the new Prison and Secure Mental Health Unit facilities be developed?

New prison facilities for male and female prisoners as well as a new Secure Mental Health Unit will be built on the site of the current prison at Risdon. Building will begin during 2003–2004. The redevelopment will take place over a six-year period. An extensive level of planning work has been undertaken to date. During 2002–2003 designs will be developed for each of the new facilities. The first components to be built will be the new Secure Mental Health Unit and the Women's Prison.

What type of facilities will be included in the first stage of the redevelopment?

A total of \$53 million was allocated for this stage of the redevelopment known as Stage C. Most of this work is to provide new accommodation and services for prisoners who are at risk in the Prison system, due to overcrowding and the inability to separate different groups of prisoners. The redevelopment will also address a lack of space to run programs and to conduct visits in the current Prison. The new Secure Mental Health Unit will replace the current inpatient mental health facilities that no longer meet required standards and which limit

the level of rehabilitation that can be achieved.

Stage C will provide the Secure Mental Health Unit (SMHU) and the following:

- prison facilities for women and accommodation for all classification levels;
- men's prison facilities and accommodation for high and medium security prisoners;
- visitor reception and processing facilities;
- security infrastructure including maximum security fencing and gatehouses;
- operations support and prisoner processing facilities;
- a visits' centre;
- some first stage industries facilities;
- temporary health out-patient facilities;
- central education and offender development areas; and
- the first stage of a multi-function facility for female prisoners (eg to enable programs, visits and out-patient health services to be provided).

Planning is still continuing which means that the specific facilities to be included in Stage C may vary as this work proceeds.

A number of facilities are indicated for development in the next stage (Stage D) of the redevelopment.

These include second stage industries' facilities, minimum security prisoner accommodation for male prisoners, the Health Centre and second stage programs' facilities for women prisoners. A decision has not yet been made about a time line for Stage D.

What will happen to the existing Prison while the building is taking place?

The new prison complex must be built while the existing facilities continue to operate. In order to do this the new Men's Prison will be connected to the existing Maximum Security Complex. The existing Men's Prison will remain operational after the current stage C is completed, to provide support service facilities (eg bulk stores, in-patient health services, laundry, and administration), as well as interim prisoner accommodation.

Where will the new facilities be built on the Risdon site?

An intensive process has taken place over recent months to identify how the new facilities can best be located on the site. The new Secure Mental Health Unit for people with severe mental health conditions will be located at the southern end of the property, and it will have its own access road branching off from the main Prison entrance. The new

Women's Prison will also be located south of the existing Prison, again with its own access road from the main entrance. The Men's Prison complex will be located to the north west of the existing complex but will adjoin the existing Maximum Security facility. The existing Prison Hospital will remain as an interim inpatient health facility, until a further stage of redevelopment is carried out. Visual displays of the layout and design concepts for the new facilities will be displayed at key locations around the community when they are available in early 2003.

What will the new facilities look like?

The new facilities will look very different to the existing buildings. The buildings will be smaller scale, and more 'residential' looking. They will also be spread out over a larger area and there will be controlled movement corridors within the complex, to enable people to move from one part to another. The new Men's and Women's Prison facilities and the Secure Mental Health Unit will each be enclosed in secure perimeter fencing.

Landscaping will be used to improve the appearance of the facilities and to provide screening for neighbours and other local resident groups. The Prisons Infrastructure Redevelopment Program team will work closely with local residents, businesses and community groups to develop effective screening and to improve the visual quality of the site.

In August/September this year prisoners will carry out some rehabilitation and revegetation of the area around the Grass Tree Hill Rivulet. Local species of plants will be used for this revegetation project.

How will the work on the new facilities be contracted?

In July 2002 expressions of interest were called for a number of the different professional groups to be involved in the redevelopment including Architects, Landscape Architects, Engineers, Security and Communications specialists. This team of professionals will be in place by November 2002. A managing contractor (the builder), will then be selected through a separate tender process, to work with the team.

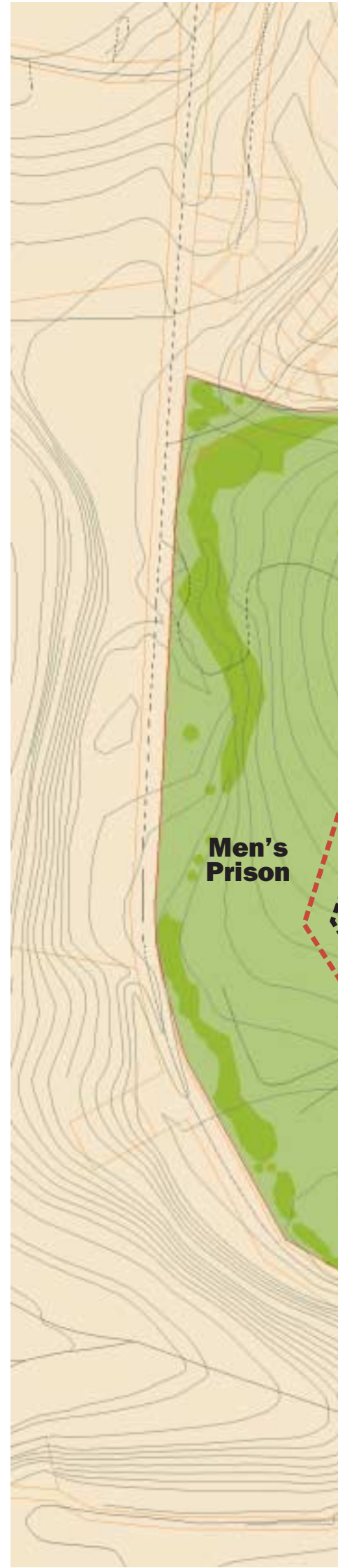
How will the new male and female prison facilities operate?

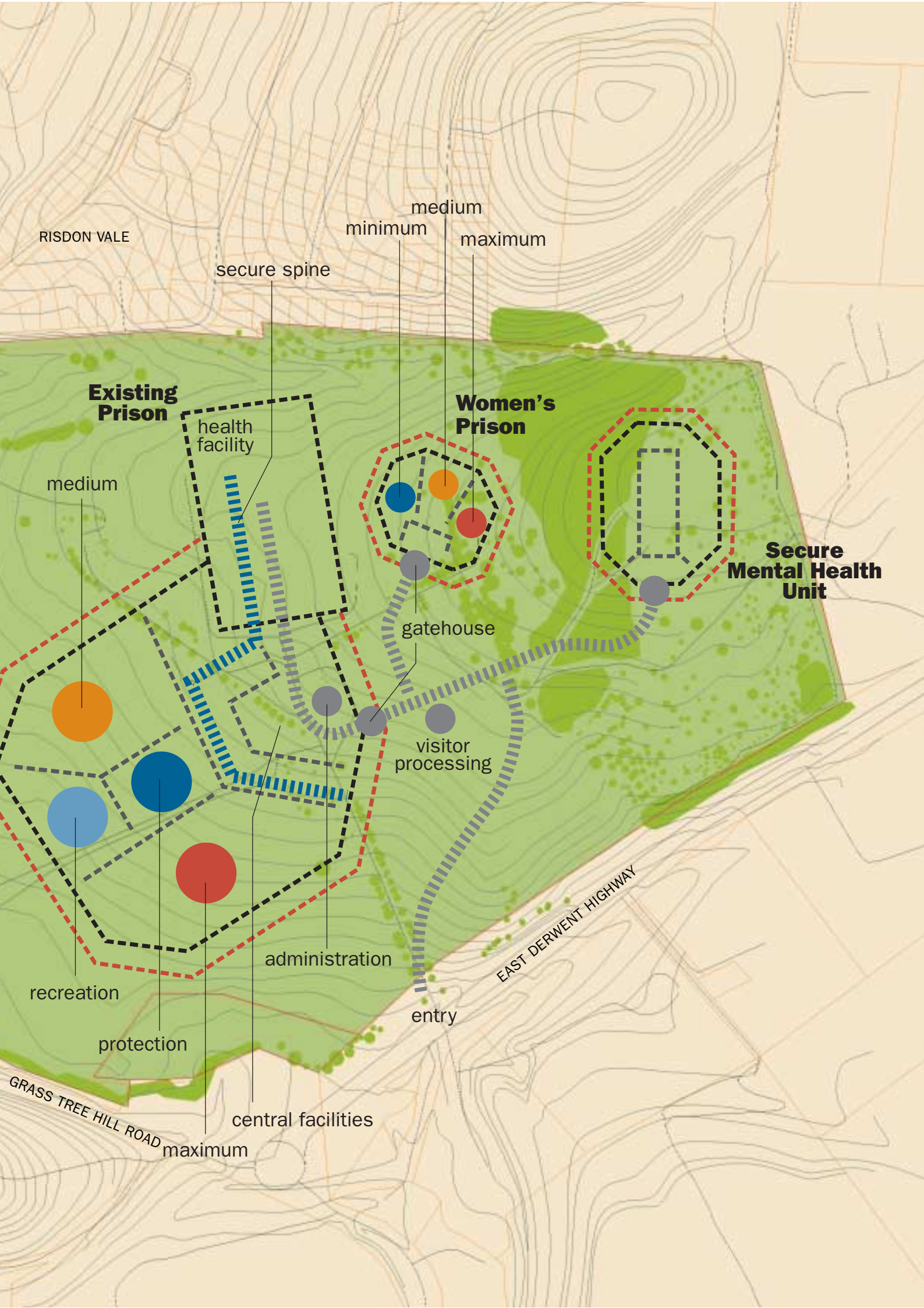
A new operating model is being developed at the same time as the new buildings are being planned. The new operating model will have a focus on:

- identifying high risk offenders (eg those at risk of self harm, those needing protection and those at risk of re-offending);
- addressing the issues that may lead to re-offending; and
- assessing the needs of prisoners and providing appropriate management and programs.

The Prison Service will meet recognised standards, apply consistent practices and work closely with other groups who provide services to prisoners and their families. Over the coming two to five years the Prison Service will be working on implementing the new model. The new model involves a number of different components:

- reception of prisoners;
- assessment of the needs of prisoners;
- determining an appropriate classification;
- placement in accommodation; and
- individual case management.





RISDON VALE

minimum medium maximum

secure spine

Existing Prison

Women's Prison

Secure Mental Health Unit

medium

health facility

gatehouse

visitor processing

administration

EAST DERWENT HIGHWAY

recreation

protection

entry

central facilities

maximum

GRASS TREE HILL ROAD